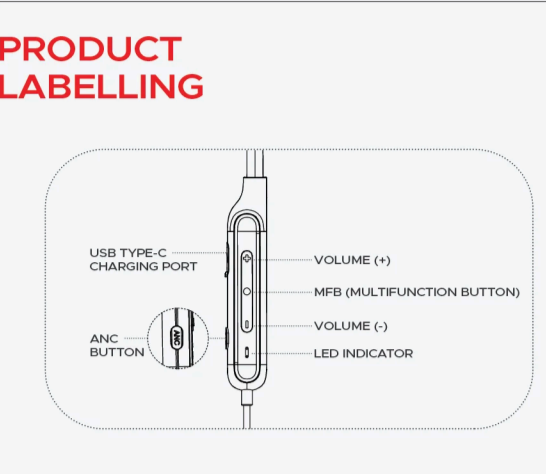




# ROCKERZ 210 ANC

## SMART GUIDE

## PACKAGE CONTENTS

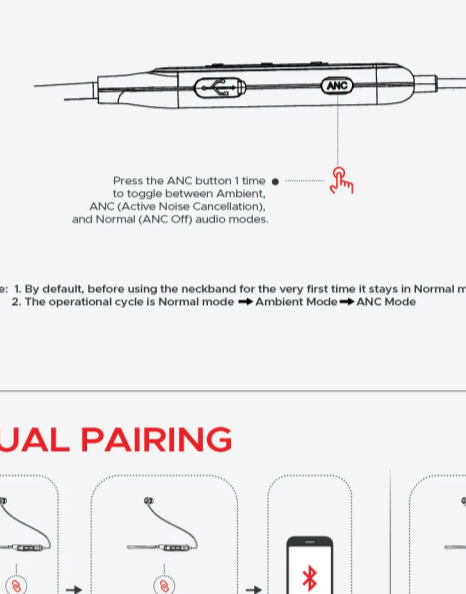


## MAGNETIC POWER ON/OFF

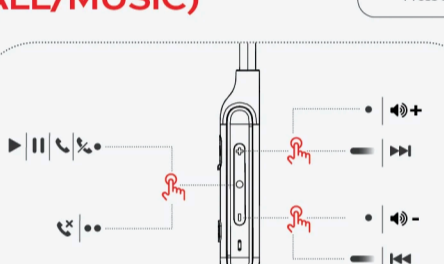


Note: To power on the earphones manually, press and hold the MFB for 3 seconds. Press and hold the MFB for 5 seconds to manually power off the earphones.

## BLUETOOTH PAIRING

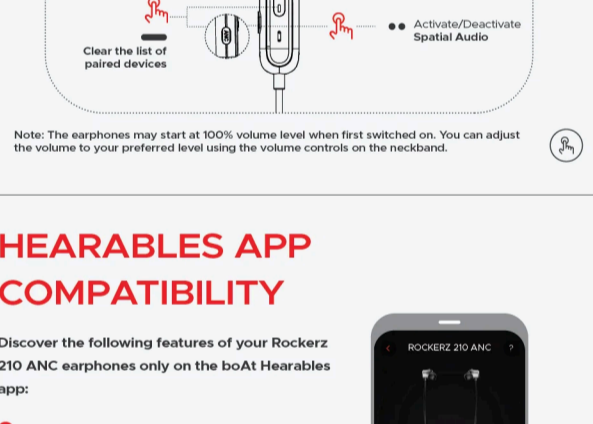


## MODES OF NOISE CONTROL



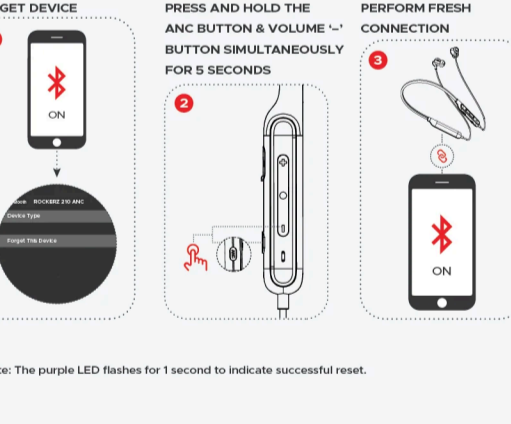
Note: 1. By default, before using the neckband for the very first time it stays in Normal mode.  
2. The operational cycle is Normal mode → Ambient Mode → ANC Mode

## DUAL PAIRING



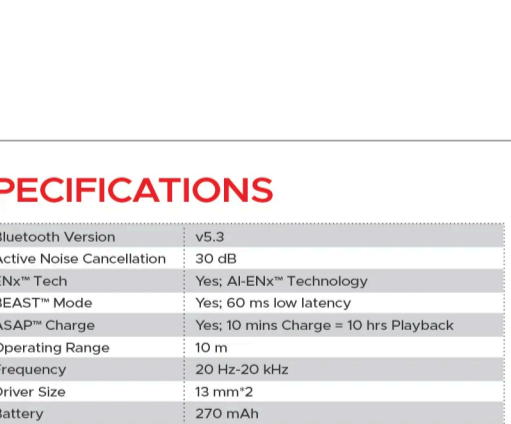
Note: If the earphones are not connected, try connecting the first device manually once again to activate dual pairing.

## FUNCTIONS (CALL/MUSIC)



Note: The earphones may start at 100% volume level when first switched on. You can adjust the volume to your preferred level using the volume controls on the neckband.

## FUNCTIONS (SPATIAL AUDIO/BEAST™ MODE/ VOICE ASSISTANT/ RESET)

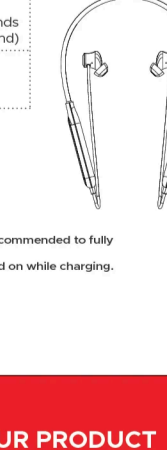


Note: The earphones may start at 100% volume level when first switched on. You can adjust the volume to your preferred level using the volume controls on the neckband.

## HEARABLES APP COMPATIBILITY

Discover the following features of your Rockerz 210 ANC earphones only on the boAt Hearables app:

- ✓ boAt Equalizer
- ✓ Battery and Connectivity Status
- ✓ Toggle Noise Cancellation Modes
- ✓ Activate/ Deactivate Spatial Audio
- ✓ Activate/ Deactivate Dual Pairing
- ✓ Button Customization
- ✓ Smart Diagnostics Mode
- ✓ Adaptive EQ



## RESET ROCKERZ



Note: The purple LED flashes for 1 second to indicate successful reset.

## LED STATUS GUIDE

|  |               |
|--|---------------|
| <20% : RED LED FLASHES EVERY 30 SECONDS WITH TONE PROMPT | LOW BATTERY   |
| SOLID RED LED  | CHARGING      |
| 100% : LED TURNS OFF                                     | FULLY CHARGED |

## SPECIFICATIONS

|                           |  |
|---------------------------|--|
| Bluetooth Version         | v5.3   |
| Active Noise Cancellation | 30 dB  |
| ENx™ Tech                 | Yes; AI-ENx™ Technology  |
| BEAST™ Mode               | Yes; 60 ms low latency   |
| ASAP™ Charge              | Yes; 10 mins Charge = 10 hrs Playback  |
| Operating Range           | 10 m   |
| Frequency                 | 20 Hz-20 kHz   |
| Driver Size               | 13 mm*2  |
| Battery                   | 270 mAh  |
| Talk Time                 | Up to 40 hours   |
| Music Playtime            | Up to 40 hours (without ANC);<br>Up to 25 hours (with ANC) (At 60% volume)   |
| Bluetooth Profiles        | RF.5.2/ BB.5.2/ LL.5.2/ LMP.5.2/ RFPHY.5.2/<br>SDP.5.2/ L2CAP.5.2/ A2DP.1.2/ AVCTP.1.4.1/<br>AVDTP.1.3/ AVRCP.1.6/ GAVDP.1.3.1/HFP.1.7/<br>HID.1.0.14/ IOP.4.0.1/RFCOMM.1.2.2/ SPP.1.2 |
| Charging Time             | About 50 mins  |
| Charging Interface        | USB Type-C   |
| Water Resistance          | IPX4   |

## CHARGING GUIDELINES

|  |  |
|--|--|
| Charging norms & Precautionary Guidelines: -   |  |
| 1) Charger/Brick/Adapter :   | 5V/2A  |
| 2) Cable/Wire :  | Standard Cable (35 strands @0.10mm diameter/ strand) |
| Any other accessory can be used to charge the product as long as the above-mentioned norms are followed. |  |



Note: (1) Before using the earphones for the first time, it is recommended to fully charge them.  
(2) Please note that the earphones cannot be used / switched on while charging.

## LEARN MORE ABOUT YOUR PRODUCT



Scan this QR Code to Access Your Product's Manual, FAQs, and Warranty Information