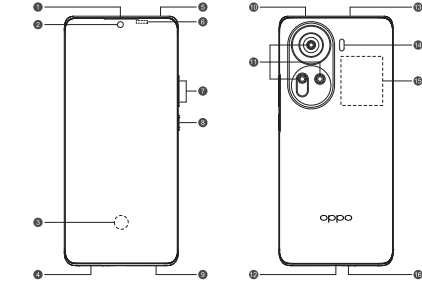


Quick Guide

This user manual provides the product safety information.
Before using the phone, please read the Quick Guide carefully.

Greetings from OPPO Mobile

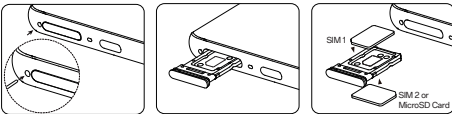
This guide will show you how to use the phone and its important functions.
You may also visit OPPO official website to get more information about the phone.



- 1 Receiver
- 2 Front Camera
- 3 Screen Fingerprint
- 4 SIM Card Tray
- 5 Secondary MIC
- 6 Proximity Sensor and Light Sensor
- 7 Volume Key
- 8 Power Key/Screen Lock Key
- 9 Speaker
- 10 Infrared Remote Control
- 11 Rear Camera
- 12 Earphone Jack & USB
- 13 Speaker
- 14 Flashlight
- 15 NFC
- 16 Main MIC

Install SIM and Memory card

Please turn off the phone before inserting the card. This product is only compatible with Nano SIM on both slots of the SIM card holder. Inserting non-standard cards can cause damage to phone SIM card holder. Keep SIM Ejector Tool out of reach of children, to prevent accidental ingestion or impalement.



How to switch system languages

Go to Settings - Additional settings - Keyboard & input method - Manage keyboards - Gboard - Languages - Add keyboard, Add your prefer languages

The device supports: English, Hindi & Nepali, for inputting.
The device also supports: Assamese, Bengali (Bangla), Gujarati, Hindi, Kannada, Kashmiri, Konkani, Malayalam, Manipuri (Bangla), Marathi, Nepali, Oriya, Punjabi, Sanskrit, Sindhi (Devanagari), Tamil, Telugu, Urdu, Bodo (Boro), Santhali (OlChiki), Maithili, Dogri, Manipuri (MeeteiMayek), Santhali (Devnagari) and English for readability.

Migrate data from your old phone to your new phone

Open the "Clone Phone" app on both old and new phones to migrate apps and data, including contacts, photos, videos, and music, from your old phone to your new phone.

- On the new OPPO phone: open "Clone Phone" from the Home screen and follow the instruction on the screen.
- On the old phone: install and open "Clone Phone", then follow the instruction on the screen.

Notes:

- If your old phone is an OPPO, realme, or OnePlus phone, open "Clone Phone" from its Home screen and follow the prompts on the screen. If you have already uninstalled "Clone Phone", you can download it from App Market.
- If your old phone is an Android phone from another brand, follow the prompts in "Clone Phone" on the new phone to install "Clone Phone" on the old phone.
- If your old phone is an iPhone, scan the QR code below or search for "Clone Phone" in App Store to install "Clone Phone".



Regulatory

Steps to search Indian Regulatory: Go to Settings - About device - Regulatory

How to reboot the phone

Press and hold the Power Button and Volume Up Button at the same time until the OPPO boot animation is displayed to reboot the phone.

Standard accessories

You are provided with the following standard accessories:

- 1 Phone, 1 Charger, 1 USB data cable, 1 Safety Guide, 1 Quick Guide, 1 SIM Ejector Tool, 1 Protective Case.



This product is conformed to High-Resolution Audio standard defined by Japan Audio Society.
The High-Resolution Audio logo is used under license from Japan Audio Society.

To experience Hi-Res Audio, you need to purchase an OPPO Hi-Res Audio headset accessory or other Hi-Res Audio headsets.

Performance parameters

Product		CPH2599
SAR Values	CE SAR	1.305W/kg (Head) 1.091W/kg (Body)
	India SAR	0.967W/kg (Head) 0.608W/kg (Body)

Note: The SAR values above are the highest values reported for this device.
For specific product parameters, please visit product page on www.oppo.com

Radio Waves Specifications

Radio	Frequency	Max. Output Power
GSM	850MHz	33.5dBm
	900MHz	33.5dBm
	1800MHz	30.5dBm
	1900MHz	30.5dBm
WCDMA	Bands 1/2/4	24.8dBm
	Bands 5/6/8/19	24.8dBm
	Band 3	24.6dBm
LTE FDD	Bands 2/4/7	24.3dBm
	Bands 12/13/17	23.8dBm
	Bands 1/5/8/18/19/20/26/28/66	24.8dBm
	Bands 38/40	24.3dBm
LTE TDD	Band 39	23.8dBm
	Band 41	25.8dBm
	n5/n78	24.7dBm
5G NR	n7/n38/n40/n77	24.2dBm
	n3	24.4dBm
	n41	26.2dBm
	n66	25dBm
	n1/n8/n20/n28	25dBm
		15dBm*
Bluetooth	2.4-2.4835GHz	12dBm(EIRP)
2.4G Wi-Fi	2.4-2.4835GHz	19dBm*
		16.8dBm(EIRP)
5G Wi-Fi	5.15-5.25GHz	19dBm*
		17.3dBm(EIRP)
	5.25-5.35GHz	19dBm*
		12.8dBm(EIRP)
	5.47-5.725GHz	19dBm*
		11.8dBm(EIRP)
NFC	5.725-5.85GHz	22dBm*
		10.9dBm(EIRP)
NFC	13.56MHz	42dBuA/m @10m

*The power parameters in this table apply to India only.

Some content may differ from your device depending on the region, service provider, or software version, and is subject to change without prior notice.

This manual is published by OPPO. OPPO may correct any misprints, errors, and inaccuracies in the manual or improve its apps or devices at any time it deems necessary without any notice. Such changes will be applied in the later versions of this manual. All images in this manual are for reference only and may differ from the actual device and UI.

Copyright © Guangdong OPPO Mobile Telecommunications Corp., Ltd. 2023.
All rights reserved.

厂家代码 物料代码
612804000357 V0.1

