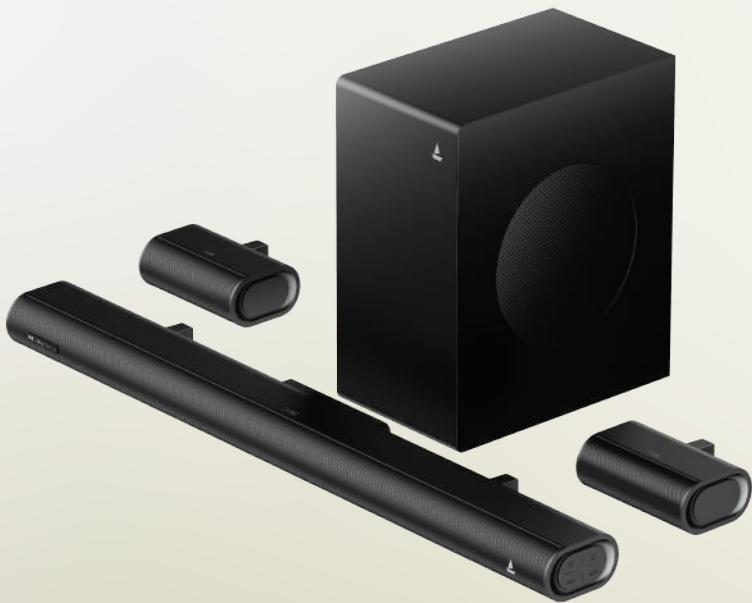


boAt



AAVANTE PRIME 5.1 **5000DA**

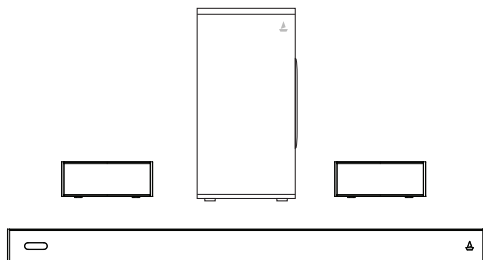
5.1-Channel 500W Dolby Atmos Soundbar
with Wired Subwoofer & Dual Wired Rear Satellite Speakers

USER MANUAL

Thank you for choosing the boAt Aavante Prime 5.1 5000DA Soundbar as the audio source for your home. You are a step away from the realm of pure audio bliss. Stay plugged into the sound with an array of wired connections, USB port, and wireless Bluetooth v5.3 technology. This 5.1-Channel Dolby Atmos soundbar with a wired subwoofer provides balanced sound for movies, music, and even video games where you can experience cinematic sound that revolves around you.

Dolby Atmos: boAt Aavante Prime 5.1 5000DA Soundbar is equipped with Dolby Atmos technology for an enthralling and breathtaking auditory experience. Dolby Atmos features greatly improved sound, more channels, less compression, and a more realistic audio experience as compared to standard-definition audio formats. At higher bit rates it is virtually indistinguishable from the source audio. We recommend that this manual be carefully read for proper usage and referred to in case of difficulties.

PRODUCT OVERVIEW




COMPONENTS LIST


- 1x Soundbar
- 1x Wired Subwoofer
- 2x Wired Surround Satellites
- 1x Remote Control
- 2x AAA Batteries
- 1x User Manual
- 1x Warranty Card
- 1x AUX Cable
- 1x Power Cable
- 1x Wall Mounting Accessories

SAFETY & WARNINGS

Caution

To reduce the risk of electric shock, do not dismantle the product and do not expose the apparatus to rain or moisture. The unit has no user-serviceable parts inside. Refer servicing to qualified personnel only.

 The lightning flash within an equilateral triangle is intended to alert you to the presence of uninsulated dangerous voltage within the product's enclosure that may be of sufficient magnitude to constitute an electric shock to a person or persons.

 Important! This symbol alerts you to read and observe important warnings and instructions on the unit or in this manual.

Notice:

This appliance is not intended for use by people (including children) with reduced physical sensory or mental capabilities, or lack of experience and knowledge unless they are under proper supervision.

Children should be supervised to ensure that they do not play with the appliance.

1. To prevent possible hearing damage, do not listen at high volume levels for long periods of time or a sudden high volume level.
2. Never use the device unsupervised! Switch off the device whenever you are not using it, even if not using it only for a short while.
3. The appliance is not intended to be operated by means of an external timer or separate remote controller system.
4. If the power supply cord is damaged, it must be replaced by the manufacturer, its service agent or similarly qualified persons in order to avoid a hazard.
5. Before operating this system, check the voltage of this system to see if it is identical to the voltage of your local power supply.
6. The unit shouldn't be impeded by covering the ventilation opening with items such as newspaper, table-cloths, curtains etc. Make sure that there are at least 20 cm of space above & at least 5 cm of space on each side of the unit.
7. The apparatus must not be exposed to dripping or splashing. Don't place objects filled with liquids such as vases, bottles or humidifiers on the unit.
8. To prevent fire or shock hazard, don't expose this equipment to direct heat, rain, moisture or dust.
9. Do not place this unit near any water sources e.g. taps, bathtubs, washing machines or swimming pools. Ensure that you place the unit on a dry, stable surface.
10. Do not place this unit close to a strong magnetic field.
11. Do not place the unit on an amplifier or a receiver.
12. Do not place this unit in a damp area as the moisture will affect the life of electric components.
13. Do not attempt to clean the unit with chemical solvents as this might damage the finish. Wipe with a clean, dry or slightly damp cloth.

14. When removing the power plug from the wall outlet, always pull directly on the plug, never pull on the cord.
15. Depending on the electromagnetic waves used by a television broadcast, if a TV is turned on near this unit while it is also on, lines might appear on the LED TV. Neither this unit nor the TV is malfunctioning. If you see such lines, keep this unit away from the TV set.
16. The mains plug is used to disconnect the device, the disconnected device should remain readily operable.

IMPORTANT SAFETY INSTRUCTIONS

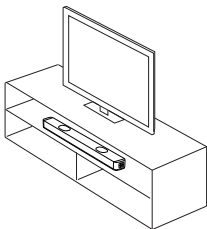
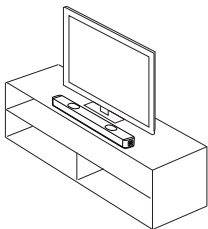
1. Read, keep, and follow all instructions. Heed all warnings.
2. Avoid dropping. Do not disassemble.
3. Do not use any corrosive cleaner/oil to clean. Clean only with a dry cloth.
4. Do not submerge in water; do not use this appliance near water. The product should not be exposed to dripping or splashing water.
5. Do not block any ventilation openings. Install it in accordance with the manufacturer's instructions.
6. Avoid extreme temperatures. Do not install near any heat sources such as radiators, heaters, stoves, or other apparatus (including amplifiers) that produce heat.
7. Protect the power cord from being walked on or pinched, particularly at plugs, convenience receptacles, or where they exit from the appliance.
8. Only use original or certified cables or attachments/accessories specified by the manufacturer.
9. Do not use the device outdoors during thunderstorms. Unplug this appliance during lightning storms or when unused for long periods of time.
10. Refer all servicing to qualified service personnel only. Servicing is required when the appliance has been damaged in any way, for example, when the power-supply cord or plug is damaged, liquid has been spilled or objects have fallen into the appliance, the appliance has been exposed to rain or moisture, does not operate normally, or has been dropped.
11. The AC plug is used to disconnect the device; the disconnected device should remain readily operable. To disconnect the device from the AC power completely, the AC plug must be removed from the AC outlet completely.
12. Make sure the power supply is correct and never handle the power cord or its plug with wet hands when plugging into or unplugging from an outlet.
13. Ensure the main power switch is in OFF state before connecting the power cord to the power supply to avoid damage to the unit.
14. A damaged power cord can easily cause an electric shock or fire hazard, never use a power cord after it has gotten damaged.

UNPACKING AND SET UP

- Remove the soundbar from the carton and remove all packing material from the soundbar. Save the packing material, if possible, in case the soundbar ever needs to be serviced or transported. The original carton and packing material are the only safe way to pack your soundbar to protect it from damage in transit.
- Remove any descriptive labels or stickers on the front or top of the cabinet. Do not remove any labels or stickers from the back or bottom of the cabinet.
- Place your soundbar on a level surface such as a table, desk, or shelf, convenient to an AC outlet, out of direct sunlight, and away from sources of excess heat, dirt, dust, moisture, humidity, or vibration.
- Unwind the line cord connecting the AC adapter and extend it to its full length.

INSTALLATION - FREE STANDING

This soundbar can sit free-standing on a surface, or it can be mounted to a wall.

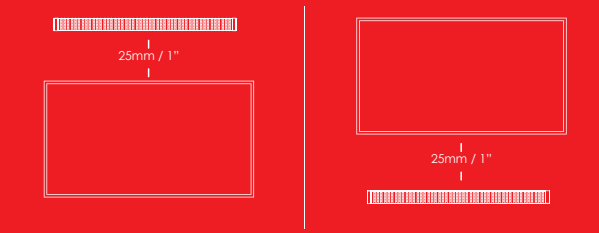


- Place the soundbar horizontally on a flat surface such as a TV unit or shelf and align it centrally with the TV screen.
- Allow some space between the speaker and the wall.
- Don't place it inside a cabinet or a walled shelf. Follow this guidance for the best sound output and good airflow around the soundbar.

INSTALLATION – WALL MOUNT

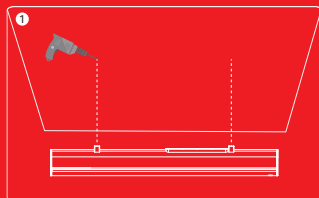
Warnings:

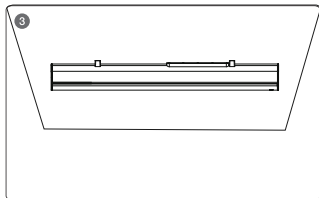
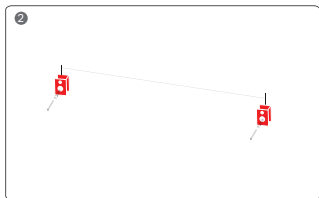
- If you don't feel confident to correctly and securely wall-mount the soundbar, seek the assistance of an experienced person or professional.
- Install the speaker on a vertical, secure, reinforced area of the wall.
- For plaster walls, it is recommended to screw into wall studs for greater security.
- For optimum performance, allow at least 25mm/1" distance between the soundbar and the TV.



Wall mounting instructions are as follows:

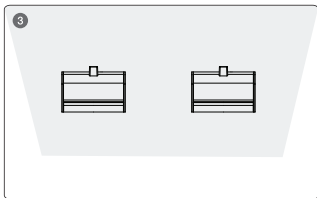
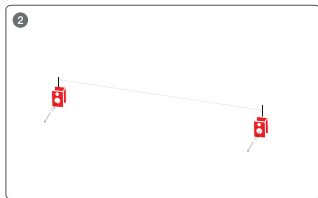
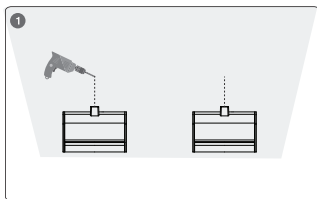
1. Drill 2 holes in the wall referring to the soundbar clamp for wall mounting; the spacing distance of the holes in the wall is corresponding to the symmetrical position of the clamps on the soundbar.
2. Fix a screw in each hole on the wall and tighten the screws to ensure that the wall mount setup will not shake.
3. Then after fastening the screw, place the soundbar clamp on the screw to mount it.





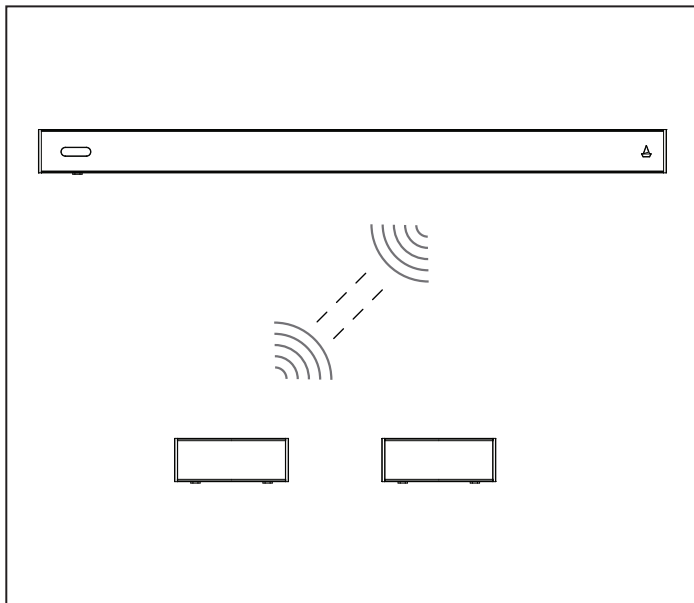
WALL MOUNTING INSTRUCTIONS SURROUND SPEAKERS

1. Drill 1 hole each for the satellite speakers in the wall.
2. Fasten the screw in the hole of the wall mount setup and tighten the screws to ensure that the mounted setup does not shake.
3. Place the surround speaker clamps on the corresponding screw.



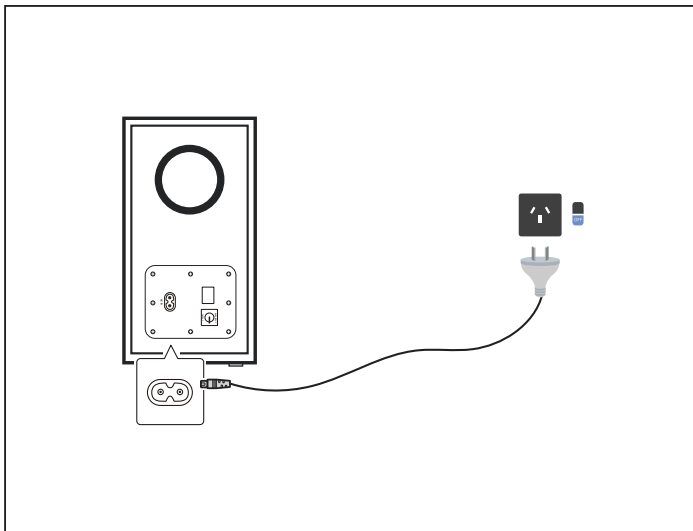
PAIRING WITH THE SURROUND SPEAKERS

1. Plug the soundbar into the main socket and press the POWER button to turn on the soundbar. Then, press the Input button on the soundbar or on the remote control to switch to Bluetooth (BT) mode.
2. Use a cable to connect the left port of the soundbar to the corresponding port of the left surround speaker and similarly, connect the right port of the soundbar to the corresponding port of the right surround speaker.
3. If you want to connect your wired surround speaker with another soundbar, please repeat steps above. Ensure that the soundbar you want to connect with the surround speaker is turned on and other pairing devices are either switched off or on standby.



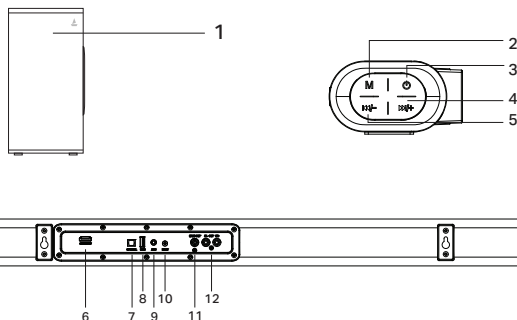
CONNECTING TO POWER SUPPLY

1. Plug in one end of the power cord to the AC IN on the subwoofer & the other side to an AC wall outlet. When you connect the subwoofer to the main socket, the unit will be in STANDBY mode.
2. Switch on the soundbar by short pressing the Power button on the soundbar or on the remote control. Within 10 seconds, the default input mode will automatically appear on the display screen.
3. Short press the power button on the soundbar or on the remote control to switch it off and then disconnect the main plug from the main socket if you want to switch the unit off completely.



CONTROLS AND CONNECTIONS

Get to know your Soundbar.



| | | |
|----|-----------------------------|--|
| 1 | Subwoofer | Wired Subwoofer. |
| 2 | Mode Button (M) | Short press to switch between Bluetooth/AUX/HDMI(e-ARC)/USB/ Optical connectivity modes. |
| 3 | Power Button | Short press for standby ON and OFF. |
| 4 | ▶▶/+ | Short press in steps to increase the volume Press and hold for 3 seconds to skip to the next track. |
| 5 | ◀◀/- | Short press in steps to decrease the volume Press and hold for 3 seconds to return to the previous track. |
| 6 | HDMI(e-ARC) | Connect to HDMI (e-ARC). |
| 7 | OPTICAL | Connect to an optical audio output on TV or digital devices. |
| 8 | USB Input | Connect the USB flash drive to the USB port on the soundbar. |
| 9 | AUX | Auxiliary Audio input from MP3/Phone/set-top box devices. |
| 10 | DC IN | Connect to power supply |
| 11 | BASS OUT (Subwoofer Output) | Connect to the wired subwoofer. |
| 12 | SL OUT SR | Connect to the left and right wired satellite speakers. |

REMOTE CONTROL BATTERY SETUP AND REPLACEMENT

Please insert the batteries as shown below-

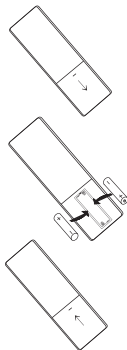
Step 1: Remove the battery compartment cover.

Step 2: Insert two AAA batteries according to the polarity markings (+ / -) inside the compartment. Make sure the batteries are correctly aligned and properly pushed into place.

Step 3: Close the battery compartment.

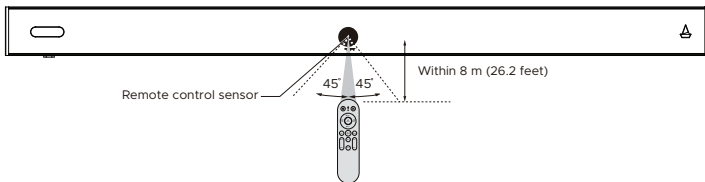
PRECAUTIONS WHEN USING BATTERIES:

- Do not use old and new batteries together.
- The batteries must not be exposed to excessive heat such as sunshine, fire etc.
- Do not use different types of batteries together.
- Install the batteries correctly as per the polarity markings to prevent battery leakage.
- Remove the batteries from the remote if you do not intend to use it for a long time.
- When discarding used batteries, follow the guidelines for recycling and disposal of batteries that apply in your local area.
- Keep batteries away from children and pets.




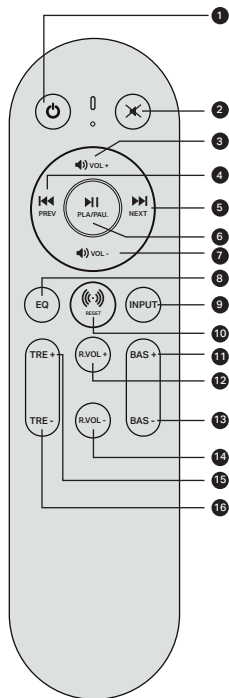
OPERATING RANGE OF THE REMOTE CONTROL

- When the unit is mounted on a wall, point the remote control at the remote-control sensor on the panel. The provided remote control allows the unit to be operated from a distance.
- Even if the remote control is operated within the effective range of 26.2 feet (8m), operation may be impossible if there are any obstacles between the unit and the remote control.
- If the remote control is operated near other products which generate infrared rays, or if other remote-controlled devices using infrared rays are used near the unit, it may operate incorrectly. Conversely, the other products may operate incorrectly.



REMOTE CONTROL OVERVIEW

1. Power Button: Short press to Power ON and OFF.
2. Mute Button: Mute/Unmute the volume;
Long press for more than 5 seconds to unpair with the connected device.
3. VOL+ Button: Short press to increase the volume.
4. Previous Track: In BT and USB mode only- Return to previous track.
5. Next Track: In BT and USB mode only- Skip to next track.
6. PLAY/PAUSE: In Bluetooth/USB modes, short press to play/pause audio.
7. VOL- Button: Short press to decrease the volume.
8. EQ: Press to switch between MUSIC/MOVIE/NEWS EQ modes
9. INPUT: Switch among input modes- Bluetooth/ Optical/ HDMI(e-ARC)/ USB/ AUX.
10.  Button: Short press this button to turn On/Off the surround sound effect [rear satellite speaker sound output on/off]; Long press this button for more than 5 seconds to unpair with the connected device and reset the soundbar to the default settings.
11. BAS+ Button: Short press to increase the bass.
12. R.VOL+ Button: Short press to increase the surround volume.
13. BAS- Button: Short press to decrease the bass.
14. R.VOL- Button: Short press to decrease the surround volume.
15. TRE+ Button: Short press to increase the treble.
16. TRE- Button: Short press to decrease the treble.



OPERATION

General Operation

| Function | Action |
|------------------------------|--|
| Turn the soundbar ON | Plug in one end of the power cord to the AC IN on the subwoofer & the other end to an AC wall outlet; the unit will be in STANDBY mode. Short press the Power Button on the remote or soundbar control panel to turn on the soundbar. |
| Turn the soundbar OFF | Short press the Power Button on the remote or soundbar control panel to switch the soundbar off or unplug from the wall outlet if you want to switch the unit off completely. |
| Change the input source/mode | When the soundbar is on, press the INPUT button on the remote or the Mode button (M) on the soundbar control panel repeatedly to change the connectivity mode. |
| Increase/Decrease the volume | Press the + / - buttons on the soundbar or the VOL + / VOL - buttons on the remote control to adjust the volume level. |

INPUT MODES

| Mode | Description |
|----------------------|---|
| HDMI (e-ARC)/Optical | Audio from TV (via HDMI e-ARC port or OPTICAL jack) |
| Bluetooth | Sound from a Bluetooth-connected device |
| USB | Sound from a USB storage device |
| AUX | Sound from a connected device (via AUX port) |

Note:

• For Dolby Atmos audio, you can play movies or videos that contain Dolby Atmos technology under HDMI (e-ARC) or Optical mode-
Go to the Sound or Speakers menu of the TV/Computer and select External Speakers or Audio System. Refer to the TV's sound settings/ computer's audio control panel to select the audio system. The soundbar LED will display 'Dolby Atmos' while the videos with Dolby Atmos technology get played.

AUTO STANDBY

1. The unit will automatically turn to standby mode when no audio input is received for 30 minutes. The soundbar will wake up from standby mode when any button is pressed, or source input is received.

2. If the TV or the external unit is disconnected, switch off the soundbar. To switch the unit off completely, remove the mains plug from the mains socket. Please turn the unit off completely to save energy when not in use.

BLUETOOTH PAIRING

Connect the soundbar to your Bluetooth device (such as an iPad, iPhone, iPod, Android phone, laptop or TV), and then you can listen to the audio files stored on the device through the soundbar speakers.

1. Turn on the soundbar and short press the M button repeatedly on the unit or the INPUT button on the remote control to switch the soundbar to Bluetooth mode. The display on the soundbar will indicate Bluetooth pairing mode.

2. Switch on the Bluetooth on the media device, search for, and select "Aavante Prime 5000 Atmos" on your Bluetooth list to pair. If prompted for a password, please use "0000".

Note:

- *If your pairing device is switched off or manually disconnected, the soundbar will automatically enter pairing mode.*
- *The connection to the device will be re-established once you re-enter wireless range (8-10 m).*
- *To connect to other devices, repeat the above pairing steps.*

PLAYING VIA USB PORT

1. When the soundbar is powered on, press the INPUT button on the remote control or the Mode (M) button on the soundbar to switch to USB input mode.
 2. Ensure that your USB flash drive contains MP3 audio files (other file types are not supported.)
 3. Connect the USB flash drive to the USB port on the soundbar or by USB adapter (or your own USB extension cable connected to the USB port), and the music will be played automatically.
 4. Press the VOL +/- buttons to adjust the volume to your desired level.
- Short press the PLAY/PAUSE button to play/pause audio.
- Short press the ⏮ button to return to the previous track. Short press the ⏭ button to skip to the next track

PLAYING VIA AUX MODE

1. Firstly, connect the soundbar to your PC, laptop, smartphone, TV, or other audio devices by using an AUX cable. Use the provided 3.5mm AUX cable to connect the PC, tablet, smartphone, TV's headphone socket to the AUX socket on the soundbar. Make sure that these devices have both AUX IN and AUX OUT terminals.
2. Then press the Mode (M) button on the soundbar or the INPUT button on the remote control to switch the soundbar to AUX mode. Once the soundbar is connected in AUX mode, the music on your connected device will play. Playback can only be controlled on your connected device.

Note: For some computers, you may need to access the audio control panel to manually set the soundbar as per the steps mentioned above.

PLAYING VIA OPTICAL MODE

Using an optical cable, connect the OPTICAL connector on your soundbar (Optical digital input) to the OPTICAL OUT connector on the TV or other device. The TV or other device must have an optical digital output.

- Remove the cap of optical cable (keep the cap for the future use); check the direction of the plug. Connect the soundbar and TV with the optical cable.
- Use this mode to play music from a TV with optical digital output on the soundbar. In TV sound settings, select the soundbar optical connection (output for audio). When the optical cable is connected, the TV audio output is set to Dolby Atmos or Auto mode.

1. Connect the optical cable to the optical digital output of your TV.
2. Connect the optical cable to the optical digital input of your soundbar.
3. Switch on the TV set and the soundbar. Set the connected TV to "Dolby Atmos or Auto mode".
4. Start playing on the TV.
5. Press "INPUT" button on the remote control or the Mode button (M) on the soundbar to select OPTICAL mode.
6. Use the volume buttons to adjust the volume to your requirements.
7. You can also change the audio settings by using the relevant buttons on the remote control.

Note:

1. When connecting a device such as a TV/Set-top box/ DVD/ game console with optical cable, set the audio output mode of the device to Dolby Atmos or Auto mode (digital optical output).
2. Do not bend the optical cable, otherwise the cable inside will be damaged.

PLAYING VIA HDMI TV (e-ARC) MODE

Connecting to HDMI TV (e-ARC) Socket

[If your TV supports Dolby Atmos, then the soundbar will display e-ARC; if the TV does not support Dolby Atmos, then the soundbar will display ARC.]

Some 4K HDR TVs require the HDMI input or picture settings to be set for HDR content reception. For further setup details on HDR display, please refer to the instruction manual of your TV.

1. The soundbar supports HDMI (e-ARC) with audio return channel (e-ARC). You can hear the TV audio through your soundbar by using a single HDMI (e-ARC) cable only if your TV is e-ARC compliant.
2. Using a high-speed HDMI (e-ARC) cable, connect the HDMI (e-ARC) connector on the soundbar to the HDMI (e-ARC) connector on the TV. The HDMI (e-ARC) connector on the TV might be labelled differently. For details, see the user manual of your TV.
3. When HDMI (e-ARC) is connected, TV sound setting in "sound output" mode should be set as <external Dolby Atmos or Auto mode>. In addition, digital audio output mode should be set as <automatic> or <decoded output as Dolby Atmos>. When the HDMI (e-ARC) cable is connected, the TV digital audio output is set as Dolby Atmos or Auto mode. Then start playing music on the TV.
4. Press "INPUT" button on the remote control or Mode button on soundbar to select HDMI (e-ARC) mode.
5. Use the volume buttons to adjust the volume to your requirements.
6. You can also change the audio settings by using the relevant buttons on the remote control.

Note:

- 1. When connecting a device such as a TV/Set-top box/DVD/ game console with HDMI (e-ARC) cable, set the audio output mode of the device to Dolby Atmos or Auto mode <digital HDMI (e-ARC) output>.*
- 2. The TV is connected to a HDMI (e-ARC) port with soundbar. Different TVs might have different setup menus, but the steps remain the same.*
- 3. If you need to connect set-top box, please first connect the HDMI (e-ARC) connector and pair to the soundbar. Then connect the set-top box.*

SPECIFICATIONS:

| | |
|-------------------------|--|
| Model Name | boAt Aavante Prime 5.1 5000DA |
| Compatibility | Bluetooth v5.3/ AUX/ HDMI(e-ARC)/ Dolby Atmos Audio/USB/Optical |
| Driver Size (in inches) | 6.5" *1 + 2" *4 + 5275mm*2 |
| Output Power | 500W |
| Frequency Response | 35Hz – 20kHz |
| Signal-to-Noise Ratio | ≥68dB |
| Impedance | 4Ω + 8Ω |
| Working Voltage | DC 24V/4A |
| Bluetooth | v5.3 |
| BT Transmission Range | Up to 10m |
| Dimensions | Soundbar: 870 X 100 X 60 Wired Subwoofer: 190 X 308 X 371 Satellite Speaker: 158 X 100 X 60 |
| Net Weight | 7.8 Kg |



boAt |  Dolby Atmos