



WARRANTY CARD  
CUSTOMER COPY

Milestone Industries (hereinafter referred to as the company) offers 1 years warranty for this product for repairing or replacing parts free of cost against defect in materials or manufacturing subject to the following terms and conditions.

- 1. This warranty is valid only if this card is duly signed and stamped by our dealer and is provided along with the original customer's copy of the purchase bill.
2. Warranty period starts from the date of purchase from our authorised dealer only.
3. The Nutri Blend has to be used with all normal care and maintenance and in accordance with instructions for use, recommended by the company.
4. This Nutri Blend should not have been repaired or tampered or altered by any agency.
5. This Nutri Blend warranty should not apply to replacement parts such as lid, rubber ring, coupler, shaft, blade, bush and handle.
6. The Nutri Blend subjected to misuse, neglect, accident, or improper installation is not covered by this warranty.
7. The customer is responsible for bringing the defective product to the service centre / manufacturing for servicing and collecting the same at his / her own cost.
8. The decision of the company is final in all cases of complaints or disputes.

Model : ..... SL No. : .....

Date of Purchase : ..... Bill No. : .....

Dealer's Signature : .....

Dealer's Name & Address:..... (Rubber Stamp)

Customer's Name & Address : .....

Phone : Res : ..... Off : .....



WARRANTY CARD  
COMPANY COPY

Model : ..... SL No. : .....

Date of Purchase : ..... Bill No. : .....

Dealer's Signature : .....

Dealer's Name & Address:..... (Rubber Stamp)

Customer's Name & Address : .....

Phone : Res : ..... Off : .....

Customer shall mail this card duly filled and stamped if the warranty card does not reach us within 15 days of the purchase, warranty will not be valid.

TROUBLE SHOOTING

Table with 3 columns: PROBLEM, REASON, WHAT TO DO. Contains troubleshooting steps for various issues like 'Unit does not start', 'Motor stops while grinding', 'Abnormal noise while in use', etc.

Incase of any doubt / fault rush to your nearest Veronica Nutri Blend dealer / Service centre.

TECHNICAL SPECIFICATION

- Input : 500 W
Voltage : 230V, Single Phase, AC, 50Hz
RPM : 22000Approx (No Load)
Insulation Class : "H" Class
Material of Housing : ABS
Material of Blade : Stainless Steel Polished
Material of Jar : Polycarbonate
Rated Liquidizer Jar : 500 ml
Rated Grinder Jar : 75 ml
Normal Load : 45 gms urad dal well soaked in water

Note: This Nutri Blend is not suitable for egg whisking.



CLEANING AFTER USE

- Every time you use a jar, clean inside by pouring a small quantity of warm water with little detergent and then operating your Nutri Blend with the blade on.
Then remove the jar from the base and wash the inner portion of the jar, blade, jar lid, and rubber ring in running water.
After washing them, dry well.
Do not immerse the Nutri Blend body in water.
Do not use rough cloth or abrasive scouring powder to avoid marks and scratches on the body of the Nutri Blend and jar.

MARKING INSTRUCTIONS

- 1. Rated Power input : Kindly refer tech. specification
2. Supply cord marking : marking of the terminals exclusively for the neutral conductor (N) is provided in the plug.
3. Usage Instruction : The appliance is not intended for use by persons (including children) with reduced physical sensor or, mental capabilities, or lack of experience and knowledge, unless they have been given supervision or instruction concerning use of the appliances by a person responsible for their safety.
4. Operating Times & Speed settings: Nutri Blend is designed for continuous Operation of 2 Minutes, after that you need to switch OFF for 5 minutes before going for the next cycle in all speeds.
5. Replacement wire cord instruction : If the supply wire cord is damaged, it must be replaced by the manufactures or service agent.
6. Rating : 2Minutes ON, 5 Minutes OFF
7. Motor : Heavy Duty (Refer Watts in Technical Specification.)



Mfg. by : MILESTONE INDUSTRIES
Survey No. 33/3, H.No. 1841, Sector 2. Gavraipada, Vasai (East), Palghar - 401208, MH INDIA.
Email: cc@msiindia.in • Website: www.msiindia.in
Customer Care No.: 09321402104

Shown Nutri Blend image is for representation purpose only, Actual Product and Accessories may differ.

www.veronica.co.in



User Manual  
with Warranty Card





Dear Customer,

Thank you for purchasing Veronica **Nutri Blend**. Like all Veronica Products, This **Nutri Blend** is the result of decades of experience and state of the art technology in the specialized field of home appliances.

Unique design and stringent quality standard, make this **Nutri Blend** highly efficient, reliable and safe to use. This **Nutri Blend** is especially equipped to tackle the toughest Indian/Asian cooking requirements.

Veronica **Nutri Blend** is ideal, not only for your usage but also an excellent gift to your loved ones. It is versatile like all other Veronica Products "Quality for a Lifetime"

This user manual contains vital information and useful tips to make the best use of this appliances. Please go through this manual and be familiar with the guidelines before using the **Nutri Blend**

We wish you many happy moments with your Veronica **Nutri Blend**

Milestone Industries

## KNOW YOUR Nutri Blend

Now that you have unpacked Veronica **Nutri Blend** Product Box, make sure that every parts shown here is present. Get acquainted with the part names.



Note: Due to constant research & Development, the parts shape, color, appearance and quantity supplied may differ from the images shown in this manual. Kindly refer content section on the product Box. Shown **Nutri Blend** image is for representation purpose only, Actual Product and Accessories may differ.

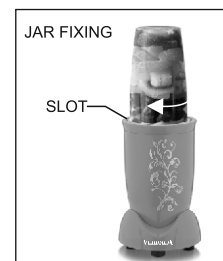
## SALIENT FEATURES

- Aesthetically designed body made of shock proof ABS Body.
- A Sturdy, Heavy Duty Motor that helps to grind faster.
- Micro Balanced rotor for low noise and efficient performance.
- Automatic overload cut-off facility for motor protection.
- Exclusively designed 2 poly-carbonate jars with fixed blades for different application.
- Special grade nylon coupler that provide firm grip and withstand enormous strain.
- Most hygienic.
- Easy - to - handle and Easy - to - Clean.
- Product warranty, kindly refer Box/warranty card for details.

## SAFETY PRECAUTIONS

- Read all the instructions carefully and be thoroughly familiar with your **Nutri Blend** before use.
- Do not Place your **Nutri Blend** on or near to hot gas burner or electric hot plate.
- Do not fix or remove the jar while the motor is running.
- Do not run the **Nutri Blend** without fixing the lid properly.
- Do not run your **Nutri Blend** with the damaged wire cord.
- Do not let the wire cord to come in contact with any hot object.
- Do not lift the **Nutri Blend** by wire cord.
- To protect against electrical hazards, do not immerse base, plug or wire cord in water or any other liquid.
- The blades are sharp so handle them with care, keep them out of reach from children.
- Ensure disconnection from mains before cleaning and when not in use.
- Close Supervision is necessary when your **Nutri Blend** is used when children around.

## HOW TO USE Poly-Carbonate JARS



Every **Poly-Carbonate** jar is provided with individual blade assembly fitted to the shaft located inside the jar. It is also provided with separate lid and rubber ring.

### TO FIX THE JAR

Place the jar in such a way that the locking ribs fit into the slot in the mounting cover of your **Nutri Blend** and turn clockwise to lock the jar in place.

## REMEMBER

- Ensure that the jar is absolutely clean before use.
- Ensure that the rubber ring is fitted securely in the lid before covering the jar.
- Ensure that the jar shaft rotates smoothly.
- Use different jars for different operations.
- After use, clean the jars as explained in this manual under "Cleaning after use".



### WET GRINDING

**USES :** Wet Grinding of coconut chutney, dal paste for vada, bonda.

Capacity : Min- Upto Blade Level  
Max. - 1/2 Jar

### JUICING / BLENDING

**USES :** Liquidising for fruit juices, soups, cocktails, milk shakes, and chutney, dal paste also.

Capacity : Min- Upto Blade Level  
Max. - 3/4 Jar

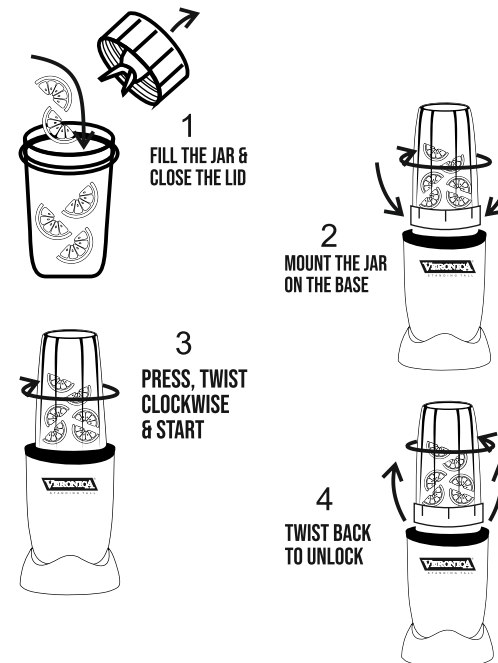


### CHUTNEY JAR

**USES :** This small Poly-Carbonate jar is ideally suited for grinding small quantities of daily requirements, it is convenient for grinding chutney, masalas, roasted coffee seeds, pepper, red chillies, coconut, ginger, raw rice, dhania, chana dal, green chillies, cashew etc.

Capacity : Min- Upto Blade Level  
Max. - 50 gms.

## HOW TO GET STARTED



## Do's



- Place your **Nutri Blend** at a convenient height, so that you can operate easily.
- Keep your **Nutri Blend** away from heat and direct sun light.
- Always operate your **Nutri Blend** at the specified voltage.
- Before first use and after a long non-usage, ensure that the shaft rotates smoothly.
- Apply oil on the jar shaft to avoid friction and sound from the jar while running.
- Avoid filling or cleaning jars by hand. It is safer and hygienic to use the spatula or a spoon.
- After use, clean the jars of existing food odours and keep them ready for future use.
- Any difficulty in starting or in the operation of the **Nutri Blend**, contact an authorised dealer, service centre or manufacturer for assistance and resolving.

## Don't's



- Do not run the **Nutri Blend** without load.
- Do not operate your **Nutri Blend** without fixing the lid properly.
- Do not allow children to handle your **Nutri Blend**
- Do not burden motor with loads heavier than specified in this manual.
- Never lay any thin plastic sheet or cloth under the basic unit. It may get sucked in and block the ventilation provided in the base.
- Do not store ingredients in the jars. Empty the contents to another container on completion of the grinding.
- Do not run the **Nutri Blend** for more than 5 minutes at a stretch. Stop for 5 minutes before starting again.
- Do not attempt to repair the **Nutri Blend** at home.

AFFIX  
STAMP  
HERE

To

**MILESTONE INDUSTRIES**  
Survey No. 33/3, H.No. 1841, Sector 2, Gavraipada,  
Vasai (East), Palghar - 401208, MH, INDIA.  
Email: cc@msiindia.in • Website: www.msiindia.in  
Customer Care No.: 09321402104